

FACULTY OF MEDICINE

Empowering Innovation in Scientific Research and Education

Laboratory of Biomechanics and Medical Imaging

Optima force plate



Acceptable device age

New



Equipment Description

Renovation of the two force platforms



Intended Use (Research, Diagnosis, etc.)

Diagnosis, Research



Estimated frequency of use

3 patients per day

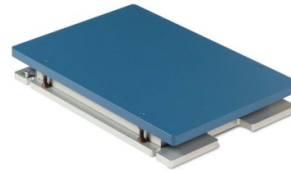


Sharing Potential with Other Laboratories

Yes



Cost Estimate : \$32,000



[For more details](#)

For any monetary donation, please scan the QR code
 Be sure to specify the name of the equipment

Contact us for any new or gently used lab equipment.
 Northamerica@usjbeirut.org (832) 360-6951

